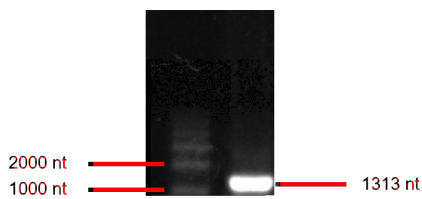
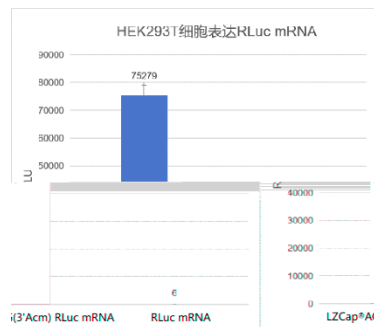


®

renilla luciferase RLuc 36 kD
480nm
LZCap®AG(3'Acm) RLuc mRNA T7
Cap0
LZCap®AG(3'Acm)
Cap1 LZCap®AG(3'Acm) Cap1 mRNA
LZCap®AG(3'Acm) RLuc mRNA poly A 5'UTR 3'UTR
mRNA mRNA LZCap®AG(3'Acm) RLuc mRNA
mRNA
1313
1 µg/µL
100 µL 1 mL
RNase
HPLC 90% 2%
-40°C



1 LZCap®AG(3'Acm) RLuc mRNA



2 HEK 293T
RLuc mRNA

LZCap®AG(3'Acm)
RLuc mRNA